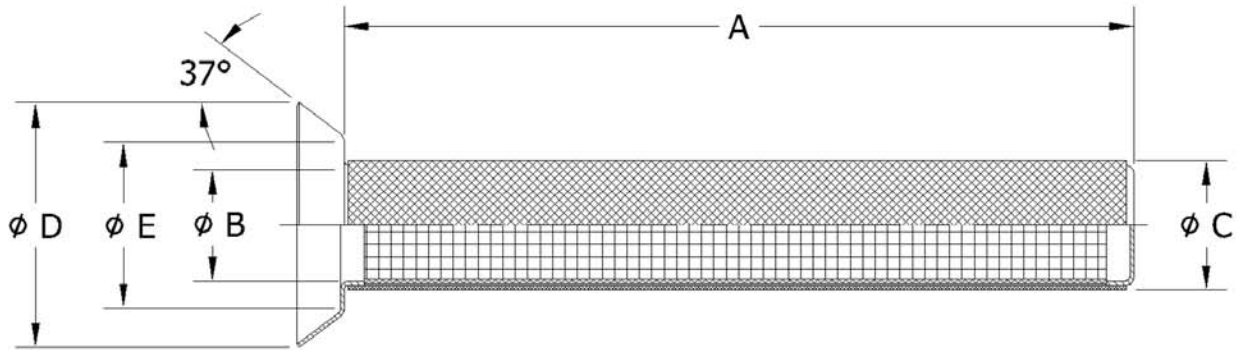




81100 Filter Element, 37° Flared

(for AS4395 Applications)



Part Number Definition: 81100- $\triangle 1$ - $\triangle 2$ -(matl)

Standard Material: 304 CRES, Alt Material Availability: 304L, 316, 316L, 347

Add "P" following main part number for passivation per AMS 2700

Add "SP" following main part number for all other passivation requirements

Part Number Examples: 81100P-6-40 • 81100-8-17-316L

Dash No $\triangle 1$	Tube OD	A ± .04	B ± .01	C MAX	D MAX	E ± .01	Min. Effective Filter Area
4	.250"	1.04"	.13"	.18"	.35"	.20"	.46 in ²
5	.312"	1.99"	.14"	.20"	.41"	.26"	1.03 in ²
6	.375"	1.99"	.18"	.24"	.47"	.33"	1.20 in ²
8	.500"	1.99"	.28"	.34"	.64"	.43"	1.82 in ²
10	.625"	1.99"	.34"	.40"	.76"	.55"	2.15 in ²
12	.750"	1.99"	.42"	.48"	.93"	.68"	2.60 in ²
16	1.00"	3.49"	.61"	.67"	1.18"	.92"	6.70 in ²

Alternate Configurations and Engineering Assistance Available

Micron $\triangle 2$	When Filtering Liquids		When Filtering Gasses	
	Nominal Micron 98% Removal	Absolute Micron 100% Removal	Nominal Micron 98% Removal	Absolute Micron 100% Removal
2	2	15	1	9
5	5	18	3.5	13
10	10	25	6	18
17	17	45	11	25
40	40	70	30	55
70	70	105	50	85
105	105	150	85	130
145	145	205	120	175
250*	250	350	200	300

*Support core omitted for 250 micron and greater